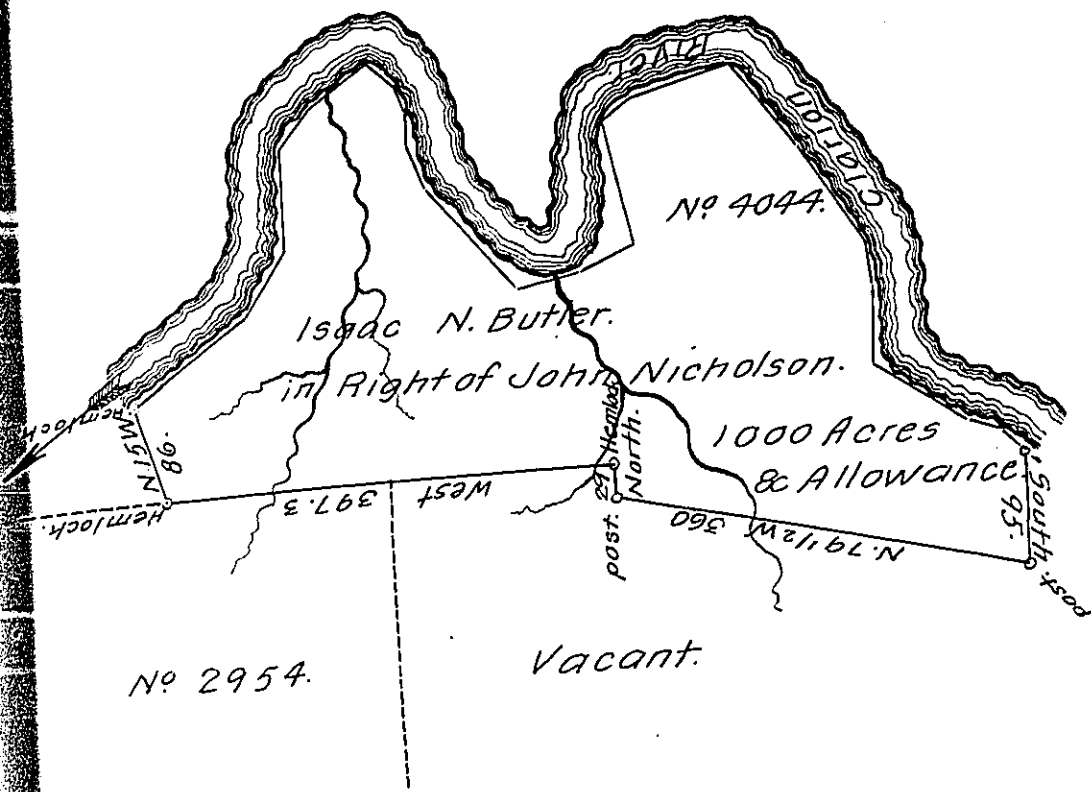


The Course & Distance
up Clarion River.

- N. 70. E. 120. North. 16.
- N. 40. E. 70. N. 53. E. 22.
- North 100. N. 63. E. 14.
- N. 40. E. 36. N. 86. E. 88.
- N. 59. E. 60. S. 32. E. 44.
- East 12. S. 34. E. 126.
- S. 52. E. 28. S. 5. E. 36.
- S. 20. E. 26. South 70.
- South 35. S. 57. E. 80.
- S. 23. E. 40. S. 80. E. 20.
- S. 40. E. 120. S. 50. E. 30.
- N. 79. E. 55. South 95.
- N. 70. E. 48.
- N. 9. E. 116.



Surveyed to Isaac N. Butler on the 21st day of October, A.D. 1831 in Right of John Nicholson the above described Tract of one thousand acres and allowance of six per Centz &c Situate on the south side of Clarion River adjoining Holland & Co. Land No 2954 & Vacant Land in the Last Purchase made of the Indians East of the Alleg-heny River and Conawango Creek in Ridgeway Township in the County of Jefferson. By warrant dated the 30th day of August A.D. 1793 ~ No 4044.

To Jacob Spangler, Esqr, }
Surveyor General. }

Elijah Heath, D.S.

IN TESTIMONY that the above is a copy of the original remaining on file in the Department of Internal Affairs of Pennsylvania, made conformably to an Act of Assembly approved the 16th day of February, 1833, I have hereunto set my Hand and caused the Seal of said Department to be affixed at Harrisburg, this twenty eighth day of July, 1910.

Anna Houch

Secretary of Internal Affairs.